



## **Convey Notes Software User Manual**

This guide will provide you with comprehensive information on identifying software tools and features, along with instructional lessons for using the software itself.

For version 2.1.7 of Convey Notes Software

The information contained herein is subject to change without notice. The only warranties for Dukane Products and services are set forth in the express warranty statements accompanying such products and services. Nothing herein should be construed as constituting an additional warranty. Dukane shall not be liable for technical or editorial errors or omissions contained herein.

## Table of Contents

### **Chapter 1. Getting Started: A Guide to Your Toolbars**

1.1 Installing and Starting your software.....	1
1.2 Main toolbar definitions and descriptions.....	2-5
1.2a-w Toolbar buttons outlined.....	5
1.3 Functional Panel definitions and descriptions.....	6-8
1.3a Index.....	6
1.3b Setup(Interface).....	6
1.3c Setup (User Info).....	7
1.3d User Manager.....	7
1.3c External Resource.....	8
1.3d Geometry Pallet.....	8

### **Chapter 2. How To's**

2.1 How to insert media files.....	9-10
2.2 How to add content to your Image Library.....	10-11
2.3 How to change users .....	12
2.4 How to use the on-screen keyboard.....	13-14
2.5 How to annotate over slides, videos, & embed into Office files.....	15-16
2.6 How to use your Tools.....	16-21
2.6a Making a screen recording.....	16-17
2.6b Setting your Timer/Clock.....	17-18
2.6c Using your Spotlight function.....	18-19
2.6d Using Image Capture.....	19-20
2.6e Using your Wrap Screen.....	21

## CHAPTER ONE- Getting Started: A Guide to Your Toolbars

### 1.1 Getting Started

#### Installation

#### Launching your Software



Go to the Start menu on the bottom left corner of your screen. Select the All Programs option and navigate to the Dukane folder. Scroll to the Convey Notes program and select it to launch the software.

You will immediately be greeted by a blank screen that corresponds to the touch screen/active area on your wireless tablet. On the bottom of the page, you will find your main toolbar.

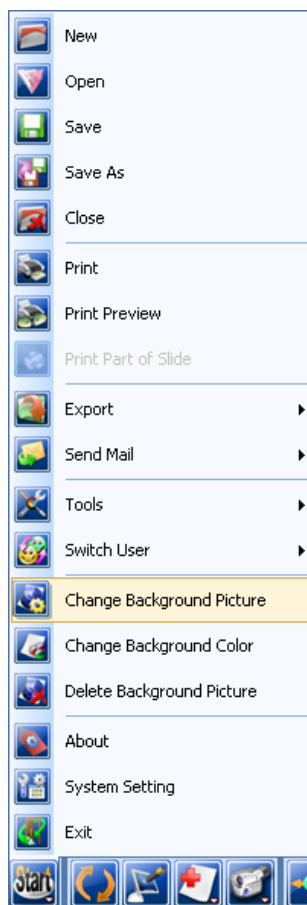
## 1.2 MAIN TOOLBAR



1.2a



The **Start Button** allows the user to print, save, email, and edit the background on the current page. It holds a number of different functions that are detailed here:



New

The **New** button allows the user to open a new page in the existing window.



Open

The **Open** button allows one to open different folders and files from his or her computer.



Save

The **Save** buttons allow you to preserve your work for a later time.



Save As



Close

Use this function to **Close** up an existing page of work as Convey Notes remains open for the next project at hand.



Print

The **Print** button will allow you to print your creation as a hard copy.



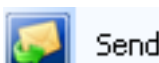
Print Preview

**Print Preview** will show you an electronic image of what your printed document will look like.



Export

The **Export** function will allow you to export picture, PowerPoint, HTML, and PDF files.



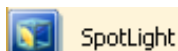
Send Mail

Convey Notes allows you to **Send** your newly-created document as an HHT, PDF, or PP attachment via email.



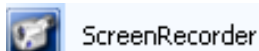
Tools

The **Tools** button is your window into a whole host of unique options for your document creation:



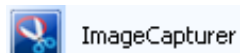
SpotLight

**Highlight** and focus in on key areas of your page.



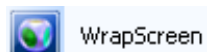
ScreenRecorder

**Record** your own movie by clicking on this button to track your drawing and edits.



ImageCapturer

Take a **Snapshot of any screen**, region, or logo you like with this tool. It will allow you to import those graphics into Convey Notes for editing.



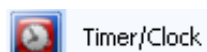
WrapScreen

**Hide or Display** different areas on your screen using this virtual cover page. Provides shading and coverage.



Screen KeyBoard

Utilize the on **Screen Keyboard** feature to enter text onto the page via text boxes.



Timer/Clock

This function will allow you to **Time** yourself during document creation.



Protractor

Use this virtual **Protractor** to measure precise angles and create designs.



30-60 Triangle Ruler



45-45 Triangle Ruler

**Rulers** aide in your line-drawing and precision.



Ruler



Compass

Use the **Compass** tool to create precise circles of all sizes- a click of your mouse controls its radius.



Switch User

The **Switch User** function allows you to shift from one user to another among differing categories.



Change Background Picture

Select from any number of files to choose a customized **Background Picture** for your page.



Change Background Color

You can choose from an array of **Color** palettes to tint your Convey Notes creation.



Delete Background Picture

This function enables you to **Erase** your chosen background picture with one click.



About

Information **About** the version number and copyright can be found here.



System Setting

**System Setting** will allow you to adjust certain pen functions as you see fit: width, smoothness, and transparency.



Exit

Selecting **Exit** will allow you to end your session with Convey Notes. Be sure to save your information before closing down.

1.2b



The **Switch Mode** function allows one to navigate between screens on your computer- in and out of the Convey Notes software so that you can work on multiple projects simultaneously.

1.2c



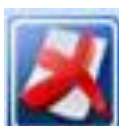
**Screen Annotation** will enable you to write and make notes using the digital pen on any screen, in any program on your computer. You can then embed the annotation to permanently save the text in the file you are annotating.

1.2d



The **New** button will allow you to add new slides including fresh screens in varying colors and backgrounds.

1.2e



The **Delete** function will erase the slides of your choosing.

1.2f



Scroll between the **Previous** and **Next** slides with this function.

1.2g



**Zoom in** and **out** of your screen with these easy-to-use functions.

1.2h



**Rover** lets you pull the screen up, down, and all around to get the best view and optimize your drawing space.

1.2i



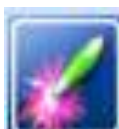
The **Pen** is the straightforward writing device of Convey Notes- you can choose your own color and line width as you navigate across the pages.

1.2j



The **Brush** lends an artist's edge to your creations- short, swift strokes for your more detailed work. Stroke width and color are customizable for you. This tool is pressure sensitive and the stroke width will be altered as more or less force is applied.

1.2k



The **Laser Pen** enables you to bring attention to certain points of interest on the screen with its draw and fade function. I.e: circle a point of interest and the mark will fade away as you move your cursor to another area of the screen.

1.2l



**Highlight** text or pictures in any number of shades with Convey Notes highlighter function- adjust the level of transparency and thickness of the pen to your liking.

1.2m



The **Intelligent Pen** allows you to draw perfect shapes with its self-adjusting feature. Draw a swirl and it will create a circle for you.

1.2n



Insert text with the **Text Box** function- draw a box and type in your text using any kind of font or color scheme.

1.2o



Using the **Media** function, you can insert pictures and video into your document, along with a variety of multimedia.

1.2p



The **Select** tool enables you to choose different items or areas for copying, pasting, and layering.

1.2q



**Erase** by region, pixels, or you can clear it all at once.

1.2r



You can **Select Pen Width** and thickness with this tool.

1.2s






Alter your pen's **Color and Texture** with this function.

1.2t

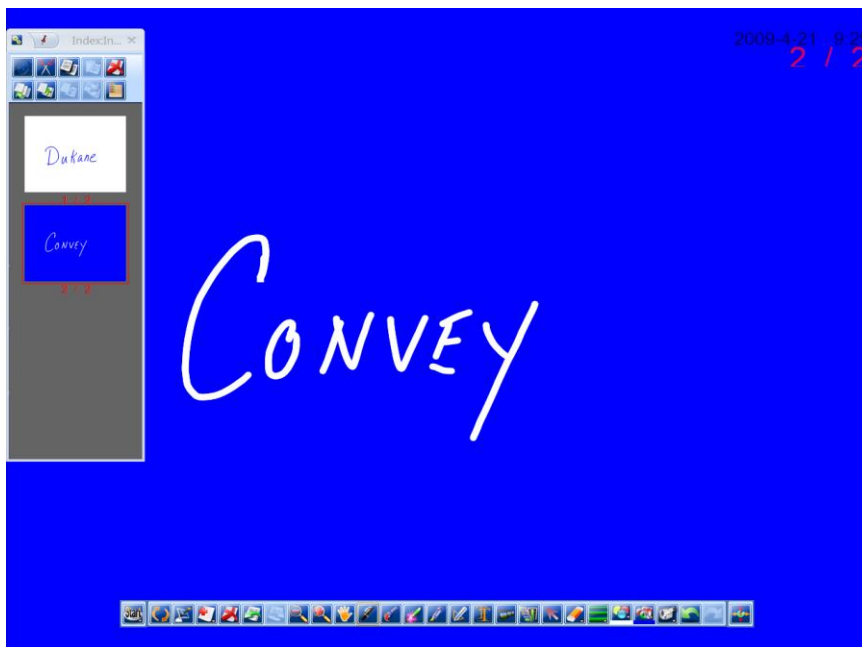


Use this feature to set your **Fill Color** and texture for the shapes you've created.

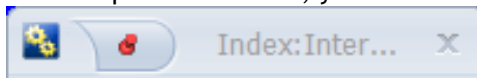
- 1.2u  Create your own recording with the **File Recorder** for immediate playback or to display your work's progress for a later showing.
- 1.2v  **Undo** and **Redo** buttons serve as simple editing of your page.
- 1.2w  Use the **Stretch** and **Rotate** function to expand or minimize the main toolbar.

### 1.3 FUNCTIONAL PANEL

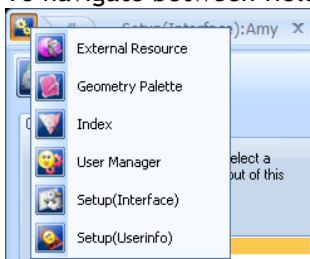
Look to the left on your Convey screen. You will notice a tab bordering the side of your page. Click on that sidebar to expand the Functional Panel which includes your Index, External Resource, Geometry Palette, Setup, and User Manager fields.



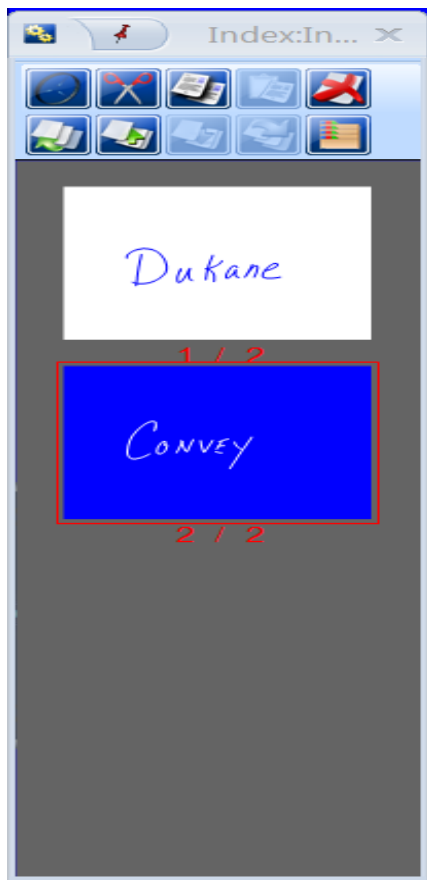
At the top of the sidebar, you'll notice the header:



To navigate between fields, click on the flowered icon to the far left:



### 1.3a Index



The **Index** serves as your one stop shop for viewing and organizing your work-in-progress slides along with handling your editing needs:



If you've used Rover to create graphics on areas of the slide outside of the screen area, clicking on **Bird's-Eye** will bring it all into view on one screen.



The **Cut Slide** function lets you eliminate any unwanted work/slides as you see fit.



The **Copy and Paste Slides** enable one to select slides directly in the Index window for copying and editing purposes.



The **Delete Slide** allows you to select and erase slides as you go.



Format the order of your slides using the **Move to Top or Bottom** functions. Simply select the slide you'd like to be listed first or last, click the corresponding key, and the slides will be reorganized for you.

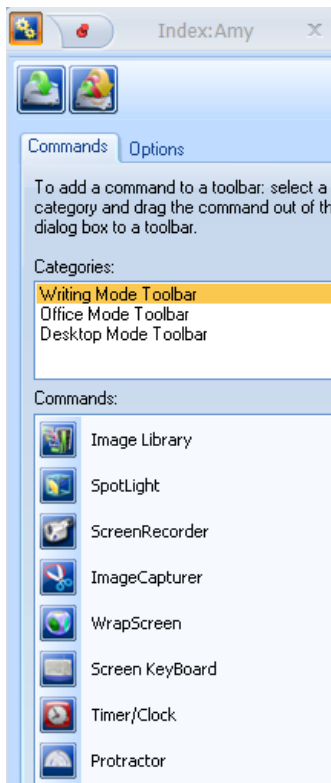


The **Move to Upper and Lower** keys allow you to select a slide that you'd like to be moved higher or lower in the cache. Just click these keys as many times as necessary to continue to move up or down in the slide order.



Using **Multi-Select Mode** makes your editing a snap- it enables you to select multiple slides at the same time in order to make any changes you see fit.

### 1.3b Setup(Interface)



The Setup (Interface) allows you to customize your toolbars according to your own preferences. For example, you may decide that one of the tools/commands from the Start menu should be more accessible and thus you can move it to the Main Toolbar for your convenience. There are three categories you may choose from when selecting your commands for relocation: Writing Mode Toolbar, Office Mode Toolbar, and Desktop Mode Toolbar. Simply drag and drop the chosen command to the toolbar on the screen you'd like to access it from.



The **Restore Current** function will return the specific toolbar category you're working in to its previous settings.

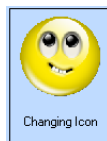
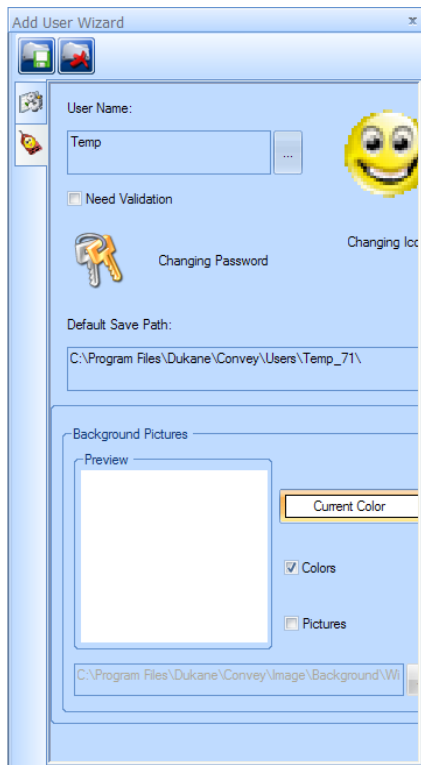


The **Restore All** function will restore all of your toolbars to their default settings, regardless of the category you are currently working in.



### 1.3c Setup(Userinfo)

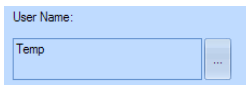
The **Setup (User Info)** allows you to change and edit your user information, including password, icon, name, and background.



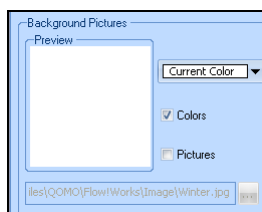
The **Changing Icon** function allows you to browse through any files on your computer to locate an icon that you feel suits your personality.



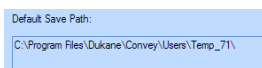
The **Changing Password** button allows you to revise your password for security purposes.



Change and validate your **User Name** with this key.



Set a default **Background** color or picture with this function.



Set or check on your **Default Save Path** in this area.



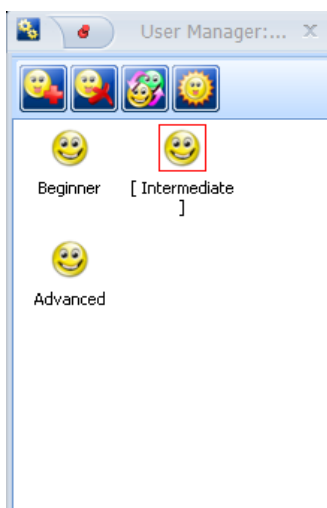
The **Restore Current** function will return the specific user settings you're working in to their default setup.



The **Restore All** function will restore all of the users saved in Convey to their default settings, regardless of the specific user you are currently working in.

### 1.3c User Manager

The **User Manager** allows you to monitor and organize the users within the Convey software. You can add as many users as necessary, set start-up defaults, and switch between users as you see fit. (Note: Customized settings and saved data are password protected for each user)



**Add or Delete Users** as necessary with these keys. (Note: setup includes option of password protection)



Select the **Switch Users** function to move between fields and to view the saved data or other accounts.



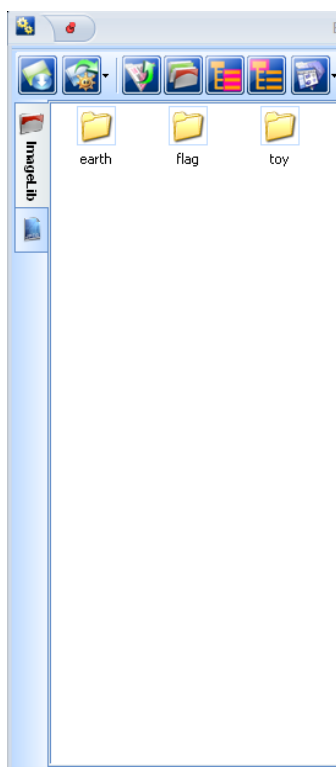
The **Set as Startup User** key allows you to set a user as a default account that automatically loads with each startup of the software.

## 1.3d



## External Resource

The **External Resource** function serves as your customizable Image Library. You can save image files from any source into your Convey Notes software and drag and drop them into your slides as you choose. This allows you to craft very creative and specialized slides. Also, data imported into this library is User-protected under your particular user name.



The **Favorite Resource** tab allows you to bookmark any file paths that you find beneficial when saving picture files to your image library.



The **Resource Manager** lets you edit your default file paths (note: file paths are your method for adding new images). You can also move between your categorized image libraries within the manager.



The **Upwards** function helps you navigate through the various folders on your computer in order to add new image files.



**Show/Hide Tree View** controls how you view your computer file paths.



**Normal Mode** displays your file paths on the left side of the screen in the common tree view that most computer users are accustomed to.



The **Show Root** key reveals the root file that you are currently looking in- it hides the file path/tree view to get there, only displaying the end folder.



In the **Display Usage** function, you can choose how you'd like your image folders arranged so that they are most easily viewed with the information that you are looking for.

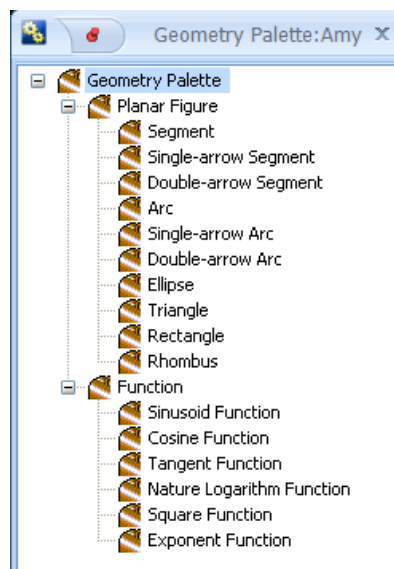
## 1.3e



## Geometry Palette

The **Geometry Palette** is extremely helpful as it serves as your principal mathematical drawing tool. You can craft anything from a rhombus to a Cosine function.

There are two categories for you to select tools from: Planar Figure and Function. Simply click on the shape or function you want, and then draw in the screen space as you would normally. You can control color, size, shaping, and of course, placement of the item.

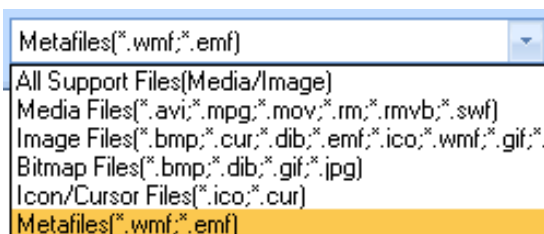



## CHAPTER TWO- How To's

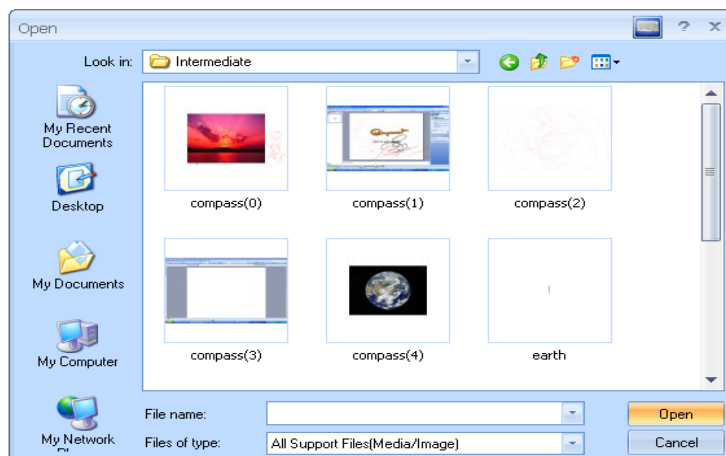
### **2.1 How to Insert Media Files**



Note: Convey Notes is compatible with the following media/image files:



- 1.) Click on the Media File key , located on the Main toolbar, on the right hand side of your screen.
- 2.) From here, you can select files from any folder on your computer, including pulling files from your User account:



- 3.) Select the media file you would like to insert into your slide.



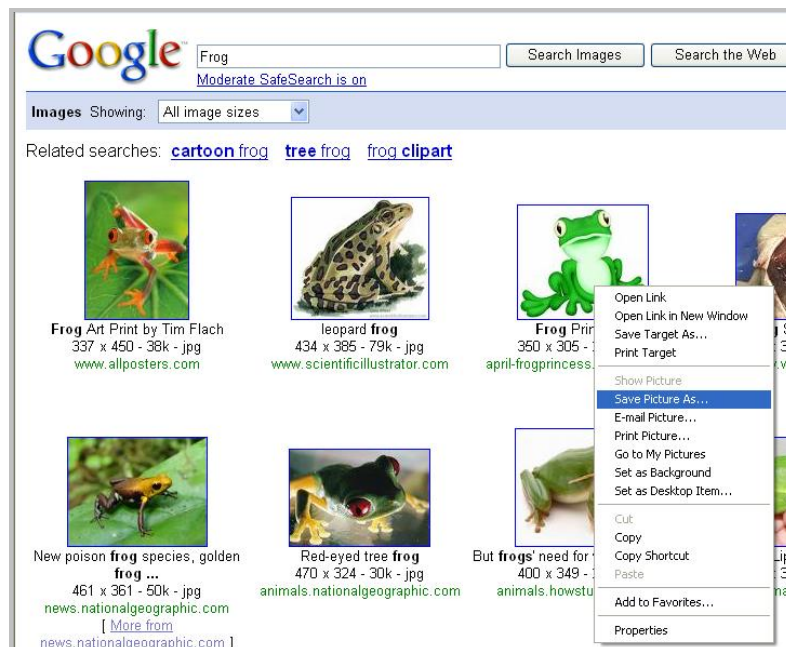
- 4.) Once you have selected the image or media, click on your slide and use the cursor to expand the size of your file. Once you are done with the sizing, your media file is ready to play!



## 2.2 How to Add Content to your Image Library

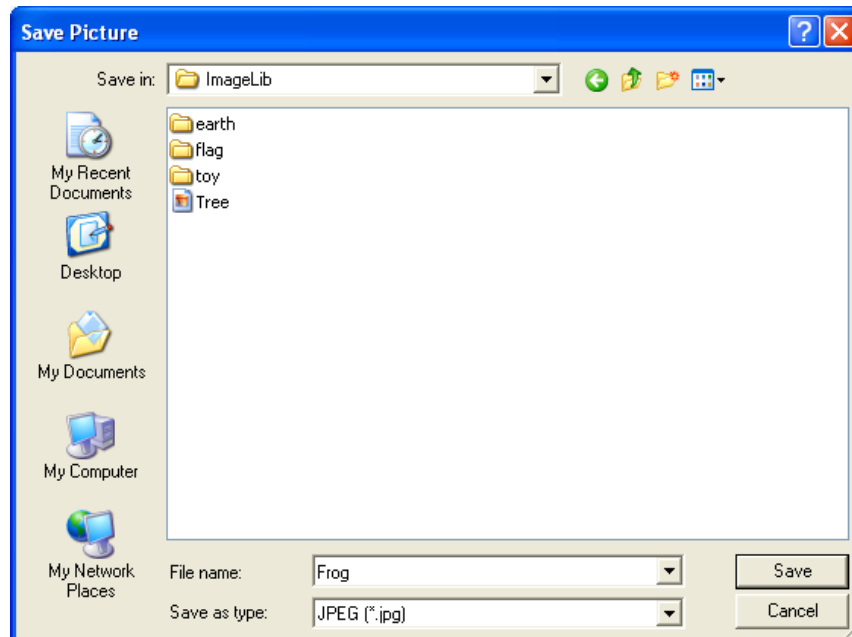
Remember that you can pull image files from any source. You can access those images/pictures through the External Resource tab in your Functional Panel (Using Tree View). The following will show you how to add images specifically to your Image Library within the External Resource tab.


- 1.) Locate the image you'd like to add and right click on it. Select **Save Picture As**.

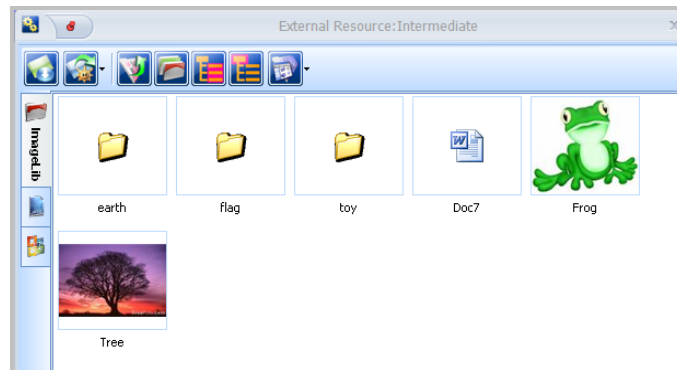


2.) You will use the following file path to save the picture in your Image Library:

**C:\programfiles\Dukane/Convey/ImageLib**



3.) To add the selected image to a slide within Convey, simply navigate to your Functional Panel (Sidebar), click on the External Resource option, and click on the second button from the left- your Resource Manager:  This will lead you to your Image Library.

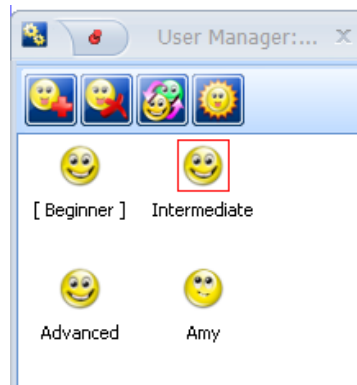


Click on the image you'd like to insert and use the cursor in your slide to size and format the image to your preference:

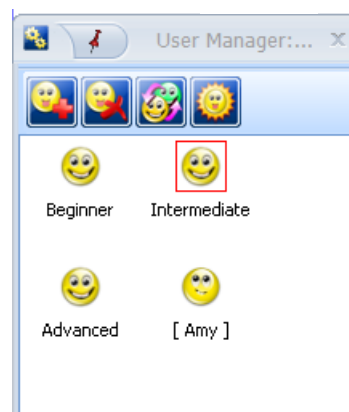


## 2.3 How to Change Users

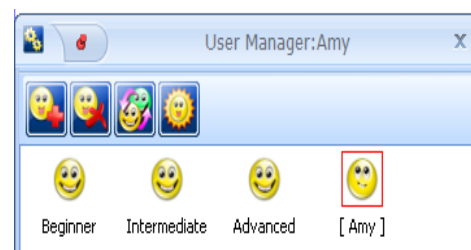
- 1.) Go to the Functional Panel (left sidebar on your screen). Navigate to the User Manager tab. From here you will notice that one of the users has a red box around it- this informs us that that particular user is the default user and will be automatically launched at startup of Convey. Another user, or possibly the same one, will have brackets around the username. This delineates the user currently operating in Convey Notes, also known as you. For example, in the tab below, you can see that Intermediate is the default user, but Beginner is the user who is currently operating and whose settings are in use.



- 2.) Now, to simply switch between users, it is very straightforward. Select the user you'd like to move to (ie: Amy) and then click the Switch User button:



- 3.) To switch between default startup users, do the same as you would to switch users, but instead of clicking the Switch User button when selecting your desired user, click the **Set as Startup User** button:

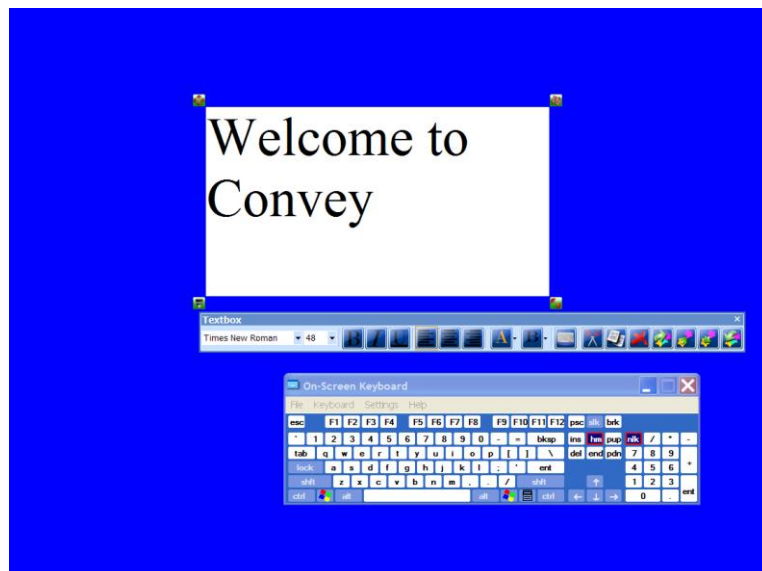
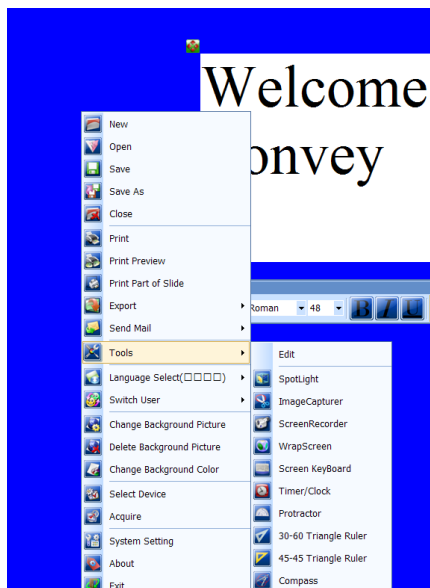


## 2.4 How to Use the On-Screen Keyboard

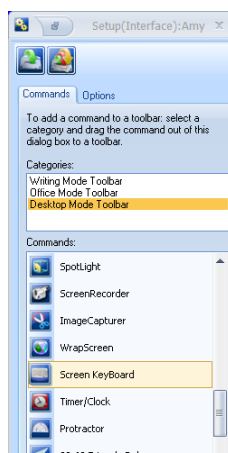
- 1.) To use the keyboard on a plain slide in Convey, simply click the Text Box key on the Main Toolbar and then use the cursor to create the text box to the size and specifications you'd prefer. You can then type using your computer keyboard. Step 2 will show you how to use the text box with your on-Screen Keyboard.



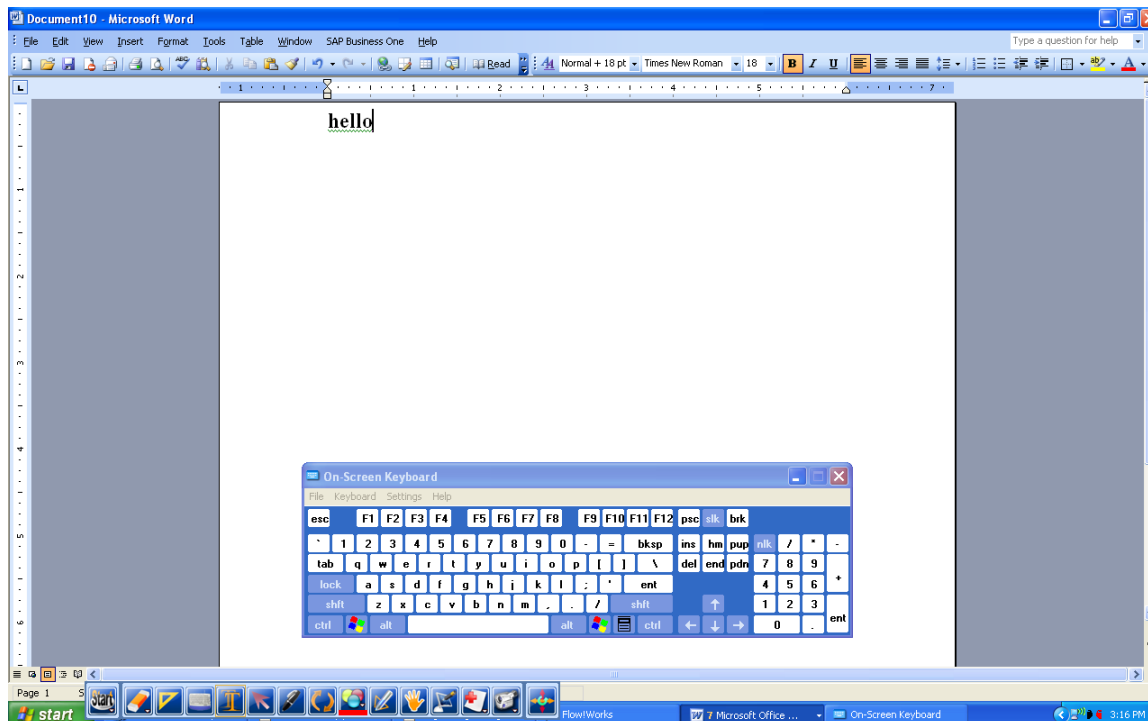
- 2.) Navigate over to Tools and select the Screen Keyboard option. You are now ready to type in the text box. You may use either your Wireless Tablet or mouse to do so.



- 3.) You can also type in Office files using your Screen Keyboard. First, go to your Functional Panel (sidebar) and select the **Setup (Interface)** tab. Select the **Desktop Mode** category and scroll down to click on your **Screen Keyboard** and drag and drop the function into your Main Toolbar at the bottom of the screen:



- 4.) Open up a document in any Microsoft Office file and click on the keyboard icon in your Desktop toolbar on the bottom of your screen. You will now be able to type anywhere within the text fields.

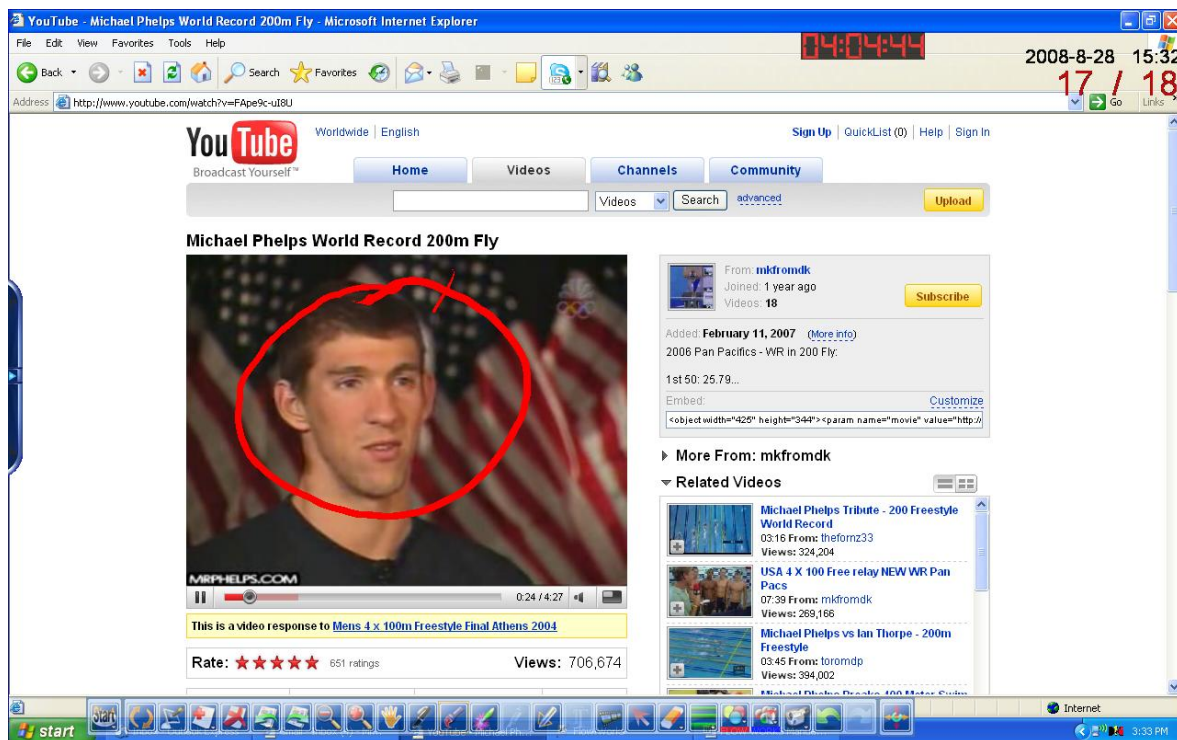


## 2.5 How to Annotate Over Slides, Videos, & Embed into Office Files

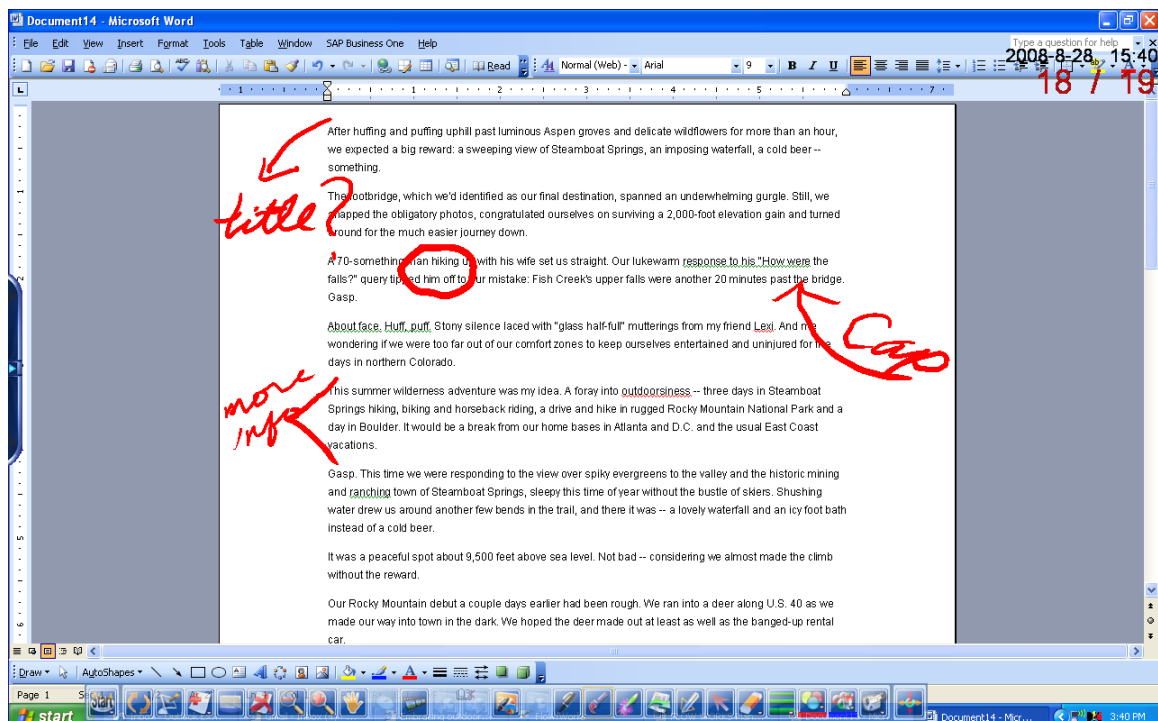
- 1.) If you wish to annotate over video, simply click the Annotate key and proceed to write on the screen, via your tablet, as though it were any other slide. You can do this with web videos and static files alike.



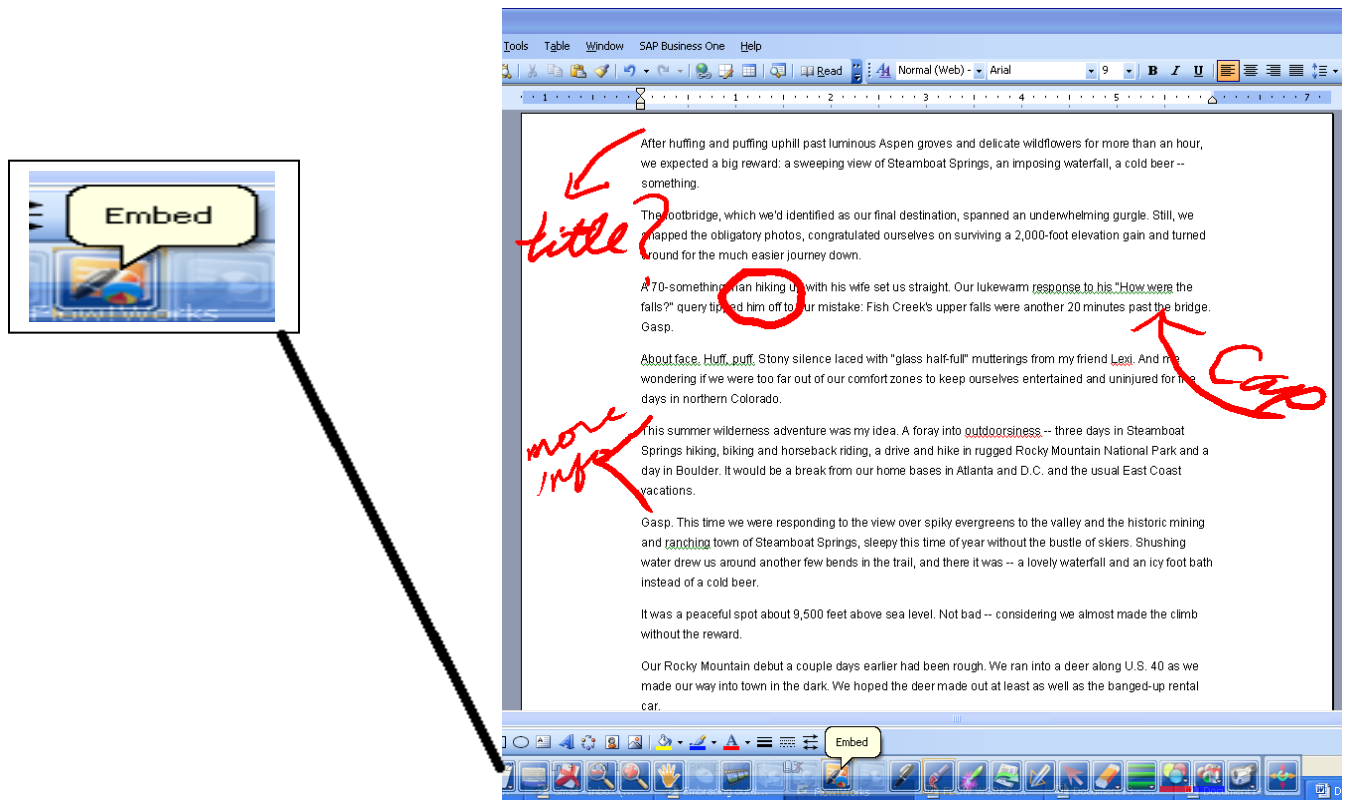
## Dynamic File:



## Static File:




- 2.) When making annotations, you may want to permanently mark and save your edits in the documents you are working on. You can do this by **embedding your annotations**. Once you've annotated on your document, click on the embed function on your Main Toolbar at the bottom of your screen to permanently alter the document:



## 2.6 How to Use Your Tools

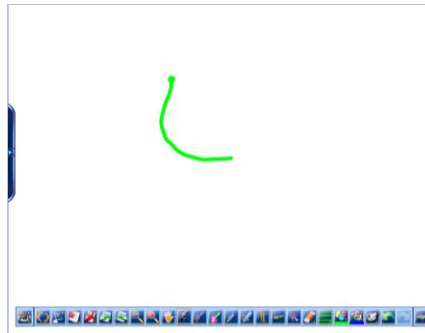
### 2.6a Making a Screen Recording

- 1.) Click on the File Recorder , located on the right hand side of the Main Toolbar on the lower part of the screen.

- 2.) Select the Record option:

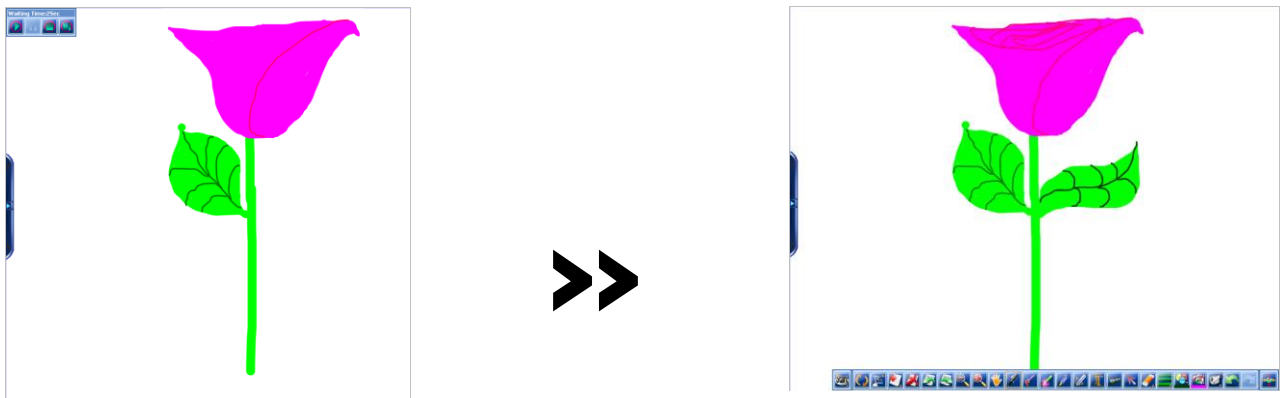


3.) Start to create your drawing or file:



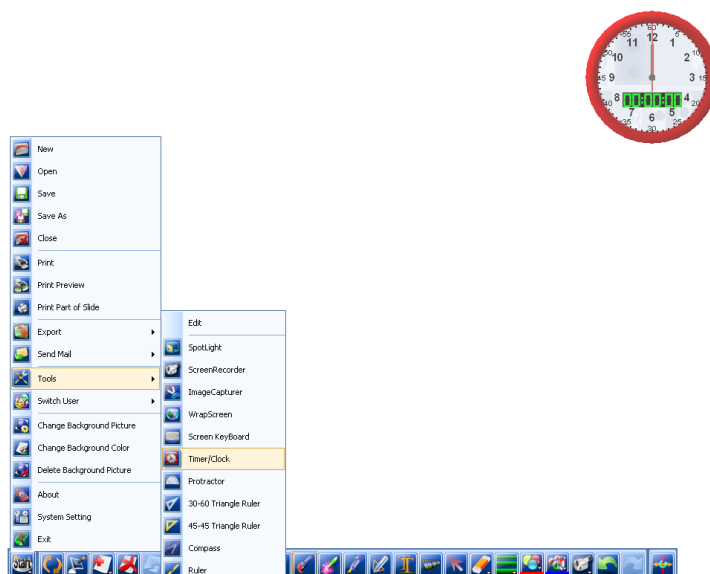
4.) Once you have completed your work, or wish to finish your recording, simply go back to the File Recorder button on the Main Toolbar and click Stop.

5.) Now you can save your file and press play to watch the project in action:

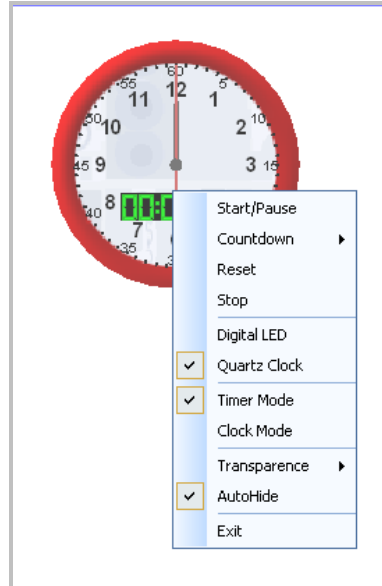


## 2.6b Setting your Timer/Clock

1.) Go to the Start button on the Main Toolbar. Scroll through it's menu until you come to the Tools option. Navigate through the Tools and click on Timer/Clock.



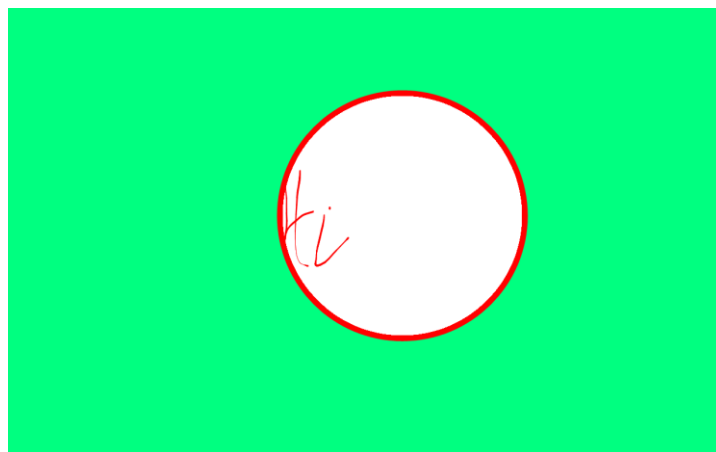
- 2.) The Timer/Clock is mobile and can be dragged around the screen until you find an appropriate place to drop it. You may also choose to make it digital. Any Timer options can be found by clicking on the clock itself.



- 3.) You can choose to put the tool in either clock or timer mode. In clock mode, the hours are recorded in military time. In timer mode, you can decide whether you'd like to simply time yourself, or to set a countdown time to control how long you spend completing a task. The countdown can be set for any length of time between 5 and 60 minutes. Your options include Stop, Pause, and Reset. You may also alter the transparence level of your timer/clock according to your preference.

### 2.6c Using your Spotlight Function

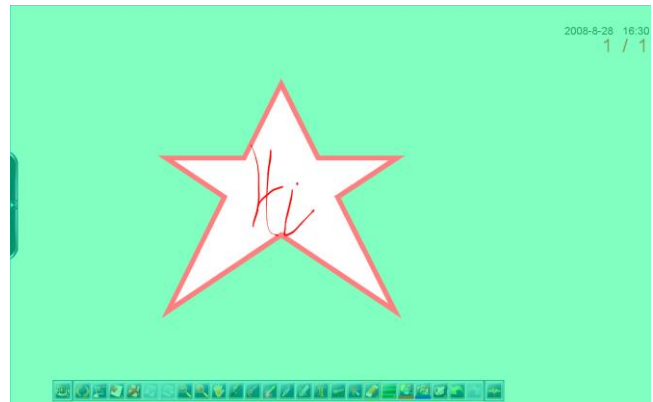
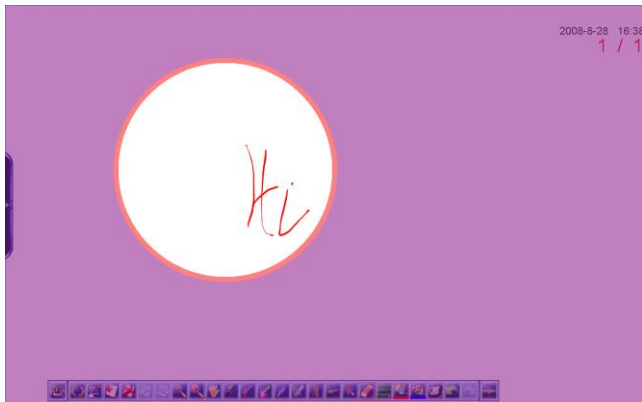
- 1.) You can highlight different areas of the page with the Spotlight function. To access this key, navigate through your Start menu and head over to Tools. Select Spotlight and your screen should change immediately:



- 2.) To change the settings of your spotlight, click anywhere on the screen.

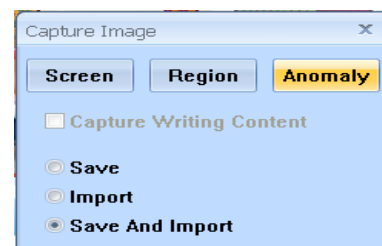
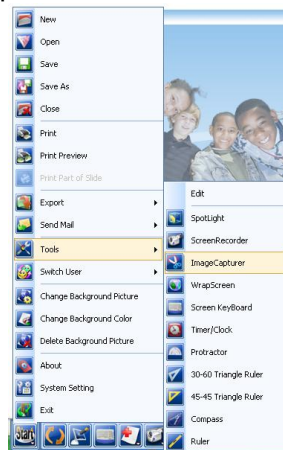


- 3.) You can edit the level of transparency, the color, and the shape of your moving Spotlight:



## 2.6d Using Image Capture

- 1.) Image Capture can be very helpful when importing pictures, logos, or media files into your slide creations. Start out by finding the image you'd like to capture. This can be static (unmoving) or dynamic (video). The video file, however, will only be captured in a freeze frame.
- 2.) Navigate through your Start menu, click on Tools, and select Image Capturer. The Capture Image screen will appear:



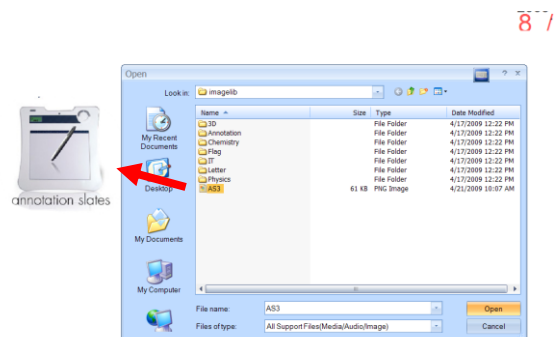
- 3.) Now, according to what you want to select on the screen, you will have to choose between three options: Capturing the entire screen, a region of the screen, or an anomaly (hand-selected area). Before you click on the option you want, **first** select whether you would like to save, import, or save & import the file. In the example below, the file is being saved and imported into the Image Library:



- 4.) Once you have done that, select the area you wish to be captured.

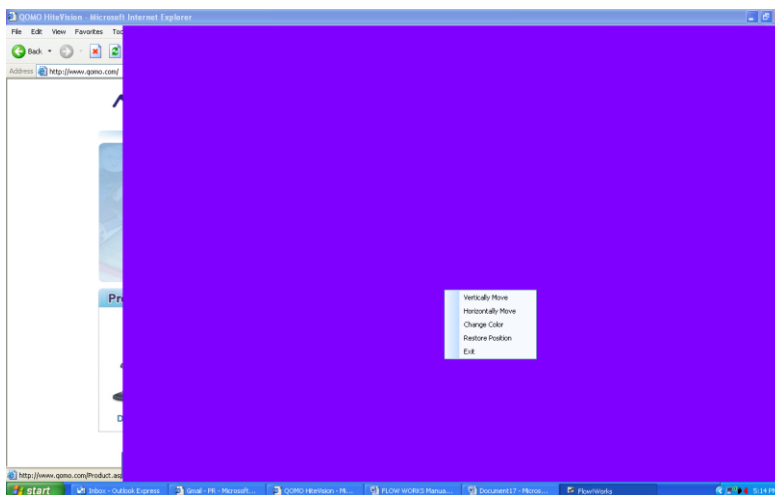


- 5.) Now, head over to the Image Library, located within your Functional Panel, to use your image file in your slides:



## 2.6e Using your Wrap Screen

- 1.) The Wrap Screen is slightly similar to the Spotlight feature, in that it can cover areas of the screen. The Wrap Screen allows you to selectively show different areas of the screen, covering or shading others-very useful for quizzes.
- 2.) Navigate through the Start panel to the Tools menu and select Wrap Screen.
- 3.) Your screen should immediately turn to a solid block of color. Click on the screen to view your options: you may alter the direction in which it can move and its color.



Vertically Move  
Horizontally Move  
Change Color  
Restore Position  
Exit

- 4.) Once your settings are in place, feel free to click on your wrap screen and move about your computer.

THE ALL NEW  
**DUKANE**  
Education. Presentation. Inspiration.

Audio Visual Products  
2900 Dukane Drive  
St. Charles, Illinois 60174  
Toll-free: 800-676-2485  
Fax: 630-584-5156  
E-mail: [avsales@dukcorp.com](mailto:avsales@dukcorp.com)  
Web: [www.dukcorp.com/av](http://www.dukcorp.com/av)

AS3 and Convey are registered trademarks of Dukane Corporation